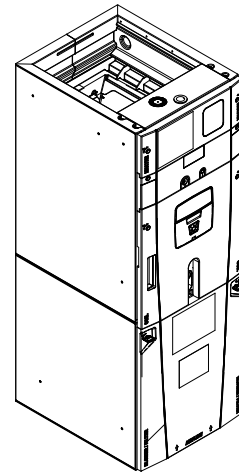


Submittal

Variable Speed Convertible Air Handler 5 Ton

TAM9A0C60V51DA



Note: "Graphics in this document are for representation only. Actual model may differ in appearance."

Note: For use with BAYEA series heaters ONLY

TAG: _____

▲ SAFETY WARNING

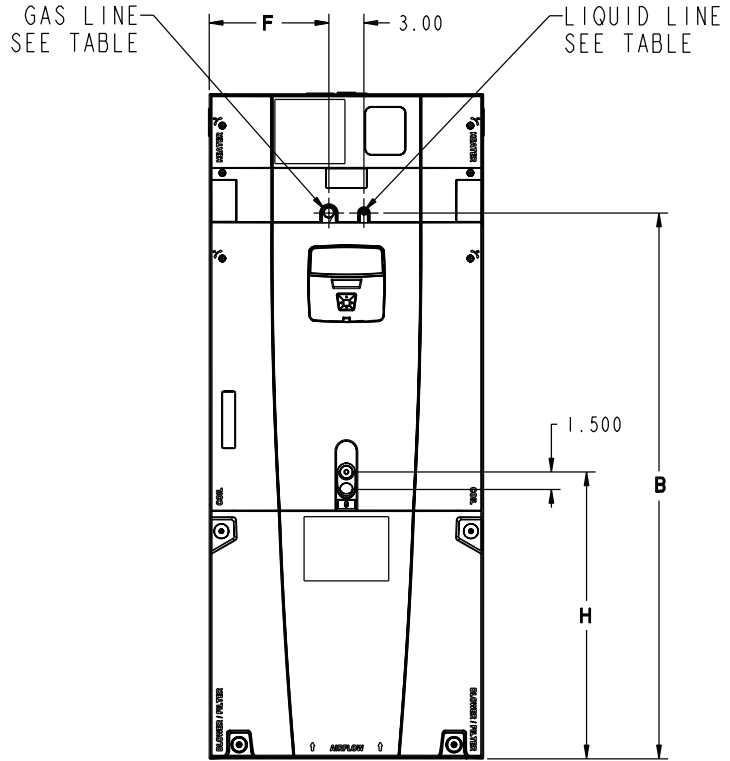
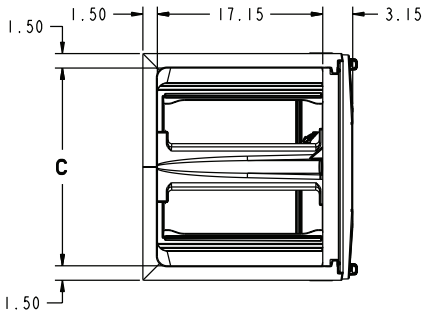
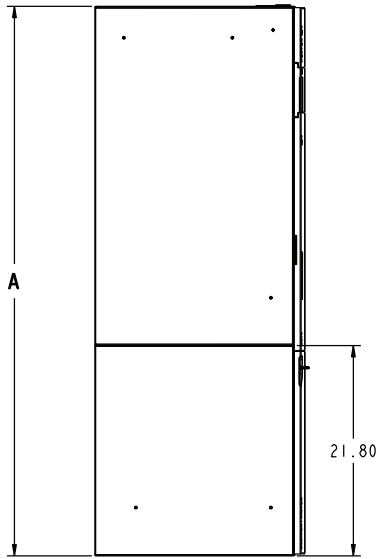
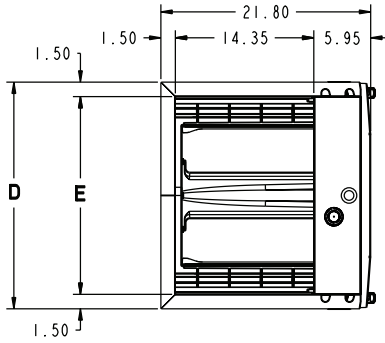
Only qualified personnel should install and service the equipment. The installation, starting up, and servicing of heating, ventilating, and air-conditioning equipment can be hazardous and requires specific knowledge and training. Improperly installed, adjusted or altered equipment by an unqualified person could result in death or serious injury. When working on the equipment, observe all precautions in the literature and on the tags, stickers, and labels that are attached to the equipment.

May 2017

TAM9A0C60-SUB-1B-EN

 Ingersoll Rand.

TAM9 OUTLINE DRAWING



MINIMUM UNIT CLEARANCE TABLE	
	SERVICE CLEARANCE (RECOMMENDED)
SIDES	2"
FRONT	21"
BACK	0"
INLET DUCT	
OUTLET DUCT	

NOTE: THIS UNIT IS APPROVED FOR INSTALLATION CLEARANCES TO COMBUSTIBLE MATERIAL AS STATED ON THE UNIT RATING NAMEPLATE

Model Number	A	B	C	D	E	F	H	FLOW CONTROL	GAS LINE BRAZE	LIQ LINE BRAZE
TAM9A0C60H51DA	61.7	51.5	20.5	23.5	20.5	10.3	24.9	EEV	7/8	3/8

PRODUCT SPECIFICATIONS

MODEL	TAM9A0C60V51DA	F.L. Amps	6.4
RATED VOLTS/PH/HZ.	200 — 230/1/60	FILTER	
RATINGS ^(a)	See O.D. Specifications	Filter Furnished?	No
INDOOR COIL — Type	Plate Fin	Type Recommended	Throwaway
Rows — F.P.I.	4— 14	No.-Size-Thickness	1 — 22 x 20 — 1 in.
Face Area (sq. ft.)	5.96	REFRIGERANT	R-410A
Tube Size (in.)	3/8	Ref. Line Connections	Brazed
Refrigerant Control	EEV	Coupling or Conn. Size-in. Gas	7/8
Drain Conn. Size (in.) ^(b)	3/4 NPT	Coupling or Conn. Size-in. Liq.	3/8
DUCT CONNECTIONS	See Outline Drawing	DIMENSIONS	H x W x D
INDOOR FAN — Type	Centrifugal	Crated (In.)	62.8 x 25.5 x 24.5
Diameter-Width (In.)	11 x 10	Uncrated	61.7 x 23.5 x 21.8
No. Used	1	WEIGHT	
Drive — No. Speeds	Direct — Variable	Shipping (Lbs.)/Net (Lbs.)	175/163
CFM vs. in. w.g.	See Fan Performance Table	^(a) These Air Handlers are AHRI certified with various Split System Air Conditioners and Heat Pumps (AHRI STANDARD 210/240).	
No. Motors — H.P.	1 — 1	^(b) 3/4" Male Plastic Pipe (Ref.:ASTM 1785-76)	
Motor Speed RPM	Variable ECM		
Volts/Ph/Hz	208-230/1/60		

HEATER ATTRIBUTE DATA

TAM9A0C60V51DA											
Heater Model No.	No. of Circuits	240 Volt					208 Volt				
		Capacity		Heater Amps per Circuit	Minimum Circuit Ampacity	Maximum Overload Protection	Capacity		Heater Amps per Circuit	Minimum Circuit Ampacity	Maximum Overload Protection
		kW	BTUH				kW	BTUH			
No Heater	0	-	-	6.4 **	8	15	-	-	6.4 **	8	15
BAYEAAC04++1	1	3.84	13100	16.0	28	30	2.88	9800	13.8	25	25
BAYEAAC05++1	1	4.80	16400	20.0	33	35	3.60	12300	17.3	30	30
BAYEAAC08++1	1	7.68	26200	32.0	48	50	5.76	19700	27.7	43	45
BAYEAAC10++1	1	9.60	32800	40.0	58	60	7.20	24600	34.6	51	60
BAYEAAC10LG3	1-3 PH	9.60	32800	23.1	36	40	7.20	24600	20.0	32	35
BAYEABC15LG3	1-3 PH	14.40	42000	34.6	50	50	10.80	36900	30.0	45	45
BAYEABC15BK1 - Circuit 1 ^(a) BAYEABC15BK1 - Circuit 2	2	9.60	32800	40.0	58	60	7.20	24600	34.6	51	60
		4.80	16400	20.0	25	25	3.60	12300	17.3	22	25
BAYEABC20BK1 - Circuit 1 ^(a) BAYEABC20BK1 - Circuit 2	2	9.60	32800	40.0	58	60	7.20	24600	34.6	51	60
		9.60	32800	40.0	50	50	7.20	24600	34.6	43	45
BAYEACC25BK1 ^(b) - Circuit 1 ^(a) BAYEACC25BK1 - Circuit 2 BAYEACC25BK1 - Circuit 3	3	9.60	32800	40.0	57	60	7.20	24600	34.6	51	60
		9.60	32800	40.0	50	50	7.20	24600	34.6	43	45
		4.80	16400	20.0	25	25	3.60	12300	17.3	22	25

Note: ** Motor Amps

^(a) MCA and MOP for circuit 1 contains the motor amps

^(b) Heater not qualified for 208V when installed in horizontal left position without Heat Pump

Note: See Product Data or Air Handler nameplate for approved combinations of Air Handlers and Heaters.

Note: Heater model numbers may have additional suffix digits.

TAM9 Air Flow Performance Tables

OUTDOOR MULTIPLIER (TONS)	TAM9A0C60 AIRFLOW PERFORMANCE										CONSTANT CFM MODE / CONSTANT TORQUE MODE									
	EXTERNAL STATIC PRESSURE (Constant CFM / Constant Torque)					HEATING AIRFLOW SETTING					AIRFLOW POWER					EXTERNAL STATIC PRESSURE				
	0.1	0.3	0.5	0.7	0.9	290 CFM/ton	350 CFM/ton	400 CFM/ton	450 CFM/ton	CFM	Watts	290 CFM/ton	350 CFM/ton	400 CFM/ton	450 CFM/ton	0.1	0.3	0.5	0.7	0.9
3.5 tons	1040 / 1151 / 94 / 119	1068 / 1056 / 151 / 148	1075 / 1041 / 203 / 168	1066 / 799 / 247 / 175	1046 / 607 / 283 / 165	290	350	400	450	CFM	Watts	290	350	400	450	1039	1065	1071	1063	1045
	1312 / 1343 / 171 / 178	1332 / 1264 / 236 / 210	1336 / 1174 / 296 / 235	1329 / 1068 / 349 / 250	1314 / 945 / 392 / 251	370	400	450	CFM	Watts	370	400	450	1247	1266	1270	1263	1248	1248	1248
	1408 / 1496 / 206 / 238	1425 / 1426 / 274 / 273	1429 / 1346 / 337 / 301	1423 / 1256 / 393 / 319	1410 / 1154 / 440 / 325	400	400	450	CFM	Watts	400	400	450	1407	1423	1426	1421	1409	1409	1409
	1565 / 1650 / 274 / 312	1579 / 1585 / 348 / 348	1584 / 1512 / 416 / 378	1580 / 1432 / 477 / 398	1569 / 1343 / 529 / 407	450	450	450	CFM	Watts	450	450	450	1564	1578	1582	1578	1569	1569	1569
	1186 / 1304 / 131 / 164	1208 / 1223 / 192 / 196	1213 / 1128 / 248 / 220	1206 / 1018 / 297 / 234	1189 / 887 / 337 / 233	290	350	400	CFM	Watts	290	350	400	1185	1206	1210	1203	1187	1187	1187
4 tons	1480 / 1514 / 235 / 245	1495 / 1444 / 306 / 280	1499 / 1365 / 372 / 308	1495 / 1277 / 430 / 327	1482 / 1177 / 479 / 334	370	400	450	CFM	Watts	370	400	450	1407	1423	1426	1421	1409	1409	1409
	1587 / 1689 / 285 / 332	1602 / 1625 / 360 / 369	1606 / 1554 / 429 / 399	1602 / 1475 / 490 / 420	1592 / 1399 / 543 / 430	400	400	450	CFM	Watts	400	400	450	1587	1600	1604	1601	1592	1592	1592
	1770 / 1873 / 386 / 443	1784 / 1813 / 468 / 481	1789 / 1747 / 543 / 512	1788 / 1675 / 612 / 534	1782 / 1597 / 671 / 546	450	450	450	CFM	Watts	450	450	450	1770	1783	1788	1788	1782	1782	1782
	1322 / 1431 / 174 / 211	1340 / 1358 / 240 / 245	1345 / 1274 / 300 / 271	1338 / 1179 / 353 / 288	1323 / 1069 / 397 / 292	290	290	290	CFM	Watts	290	290	290	1321	1338	1342	1336	1322	1322	1322
	1646 / 1667 / 315 / 320	1660 / 1602 / 392 / 357	1665 / 1530 / 463 / 386	1662 / 1451 / 527 / 407	1653 / 1363 / 582 / 417	370 +	350	350	CFM	Watts	370 +	350	350	1564	1578	1582	1578	1569	1569	1569
4.5 tons ***	1770 / 1873 / 386 / 443	1784 / 1813 / 468 / 481	1789 / 1747 / 543 / 512	1788 / 1675 / 612 / 534	1782 / 1597 / 671 / 546	400	400	450	CFM	Watts	400	400	450	1770	1783	1788	1788	1782	1782	1782
	1989 / 2099 / 535 / 612	2004 / 2042 / 627 / 650	2012 / 1980 / 712 / 681	2013 / 1913 / 788 / 703	2009 / 1842 / 855 / 716	450	450	450	CFM	Watts	450	450	450	1989	2003	2011	2014	2011	2011	2011
	1452 / 1557 / 224 / 265	1469 / 1489 / 294 / 301	1473 / 1413 / 358 / 329	1468 / 1327 / 415 / 348	1455 / 1231 / 463 / 356	290	290	290	CFM	Watts	290	290	290	1452	1467	1471	1466	1454	1454	1454
	1817 / 1826 / 415 / 451	1831 / 1765 / 499 / 451	1837 / 1698 / 576 / 481	1837 / 1624 / 647 / 503	1831 / 1544 / 708 / 515	370	350	350	CFM	Watts	370	350	350	1723	1736	1741	1740	1734	1734	1734
	1964 / 2073 / 516 / 590	1978 / 2015 / 607 / 629	1986 / 1953 / 690 / 660	1987 / 1886 / 766 / 682	1983 / 1814 / 832 / 695	400	400	400	CFM	Watts	400	400	400	1964	1978	1985	1988	1985	1985	1985
5 tons	2231 / 2347 / 741 / 842	2245 / 2292 / 842 / 879	2252 / 2233 / 934 / 908	2252 / 2171 / 1015 / 930	2185 / 2104 / 1024 / 941	450	450	450	CFM	Watts	450	450	450	2232	2245	2252	2252	2186	2186	2186
	1817 / 1826 / 415 / 451	1831 / 1765 / 499 / 451	1837 / 1698 / 576 / 481	1837 / 1624 / 647 / 503	1831 / 1544 / 708 / 515	370	350	350	CFM	Watts	370	350	350	1723	1736	1741	1740	1734	1734	1734
	1964 / 2073 / 516 / 590	1978 / 2015 / 607 / 629	1986 / 1953 / 690 / 660	1987 / 1886 / 766 / 682	1983 / 1814 / 832 / 695	400	400	400	CFM	Watts	400	400	400	1964	1978	1985	1988	1985	1985	1985
	2231 / 2347 / 741 / 842	2245 / 2292 / 842 / 879	2252 / 2233 / 934 / 908	2252 / 2171 / 1015 / 930	2185 / 2104 / 1024 / 941	450	450	450	CFM	Watts	450	450	450	2232	2245	2252	2252	2186	2186	2186
	1817 / 1826 / 415 / 451	1831 / 1765 / 499 / 451	1837 / 1698 / 576 / 481	1837 / 1624 / 647 / 503	1831 / 1544 / 708 / 515	370	350	350	CFM	Watts	370	350	350	1723	1736	1741	1740	1734	1734	1734

- † Factory Setting
- ** Not an actual OD size
- Status LED will blink once per 100 CFM requested. In torque mode, actual airflow may be lower.
- Torque mode will reduce airflow when static is above approximately 0.4" water column.
- If the air handler is applied in downflow or horizontal configurations, the airflow should not exceed 2000 CFM. Airflow above 2000 CFM could result in water blow-off.
- All heating modes default to Constant CFM.
- Cooling airflow values are with wet coil, no filter

TAM9A0C60 MINIMUM HEATING AIRFLOW CFM — HEATER MATRIX							
MODEL NO.	BAYEAA04BK1 BAYEAA04LG1 BAYEAA05BK1 BAYEAA05LG1	1063 / 1188	BAYEAA08BK1 BAYEAA08LG1	1063 / 1500	BAYEAA10BK1 BAYEAA10LG1	1125 / 1500	1000 / 1188
			BAYEAB15BK1	1125 / 1563	BAYEAB15LG3	1250 / 1625	1500 / 1750
							1625 / 1813
TAM9A0C60							

WITHOUT HEAT PUMP / WITH HP — SEE AIR HANDLER NAMEPLATE

Features and Benefits

- Unique cabinet design
 - 2% or less air leakage
 - Precision applied — durable door seals
 - Specially designed air seal around refrigerant, condensate and conduit connections
 - Double wall foamed cabinet system
 - R-4.2 Insulating Value (Avg Insulating Value R-8.2)
 - No loose fiber design
 - Smooth cleanable interior design
 - Sweat eliminating design
 - Composite foamed cabinet doors
 - Water proof cabinet design
 - Integrated horizontal drain pans
 - Modular cabinet
- Multi-position up/down flow horizontal left/right
- Communicating or 24 Volt control
- Control Display Assembly (CDA) with enhanced diagnostic information and setup capability
- Side return option (sold as accessory)
- Control board protection pocket built into cabinet wall
- Pre-marked Conduit Connection Locations
- Alert port to view control board codes without door removal
- Alert code notification
- Low voltage terminal connection point
- Phillips head door fasteners
- **Vortica®** blower with polarized plug connections and integrated slide deck for easy removal
- Aluminum coil with integrated slide deck for easy removal and polarized plug connections on coil EEV
- Patented enhanced coil fin
- Electronic Expansion Valve (EEV) with low ambient and low superheat compressor protection
- Dual refrigerant compatible as shipped
- Slide in electric heaters with polarized plug connections (sold as accessory)
- Slide in hot water coils with polarized plug connections (sold as accessory)
- UVC light kit with safety switch and polarized plug connections (sold as accessory)
- Labeled panels and connections
- Molded in 1" standard filter rail
- Variable speed ECM motor
- Soft start fan motor operation
- **Comfort R™** mode
- Built in fan delay modes
- Maximum width of 23.5"
- Compact 20.8" depth with doors removed
- Fused 24v power
- Safety door switch
- **5 Year Warranty**
- **10 Year Warranty Registered**
- **Optional Extended Warranty Available**



Ingersoll Rand (NYSE: IR) advances the quality of life by creating comfortable, sustainable and efficient environments. Our people and our family of brands – including Club Car®, Ingersoll Rand®, Thermo King® and Trane® – work together to enhance the quality and comfort of air in homes and buildings; transport and protect food and perishables; and increase industrial productivity and efficiency. We are a global business committed to a world of sustainable progress and enduring results.



ingersollrand.com

Ingersoll Rand has a policy of continuous product and product data improvements and reserves the right to change design and specifications without notice.

We are committed to using environmentally conscious print practices.

TAM9A0C60-SUB-1B-EN 09 May 2017

Supersedes TAM9A0C60-SUB-1A-EN (March 2017)

©2017 Ingersoll Rand